

# LUNA-G E34P



long term care beds



1946-2016  
70 years

**IMO**

medical beds worldwide





# CORPORATE PROFILE

- COMPANY **IMO-Indústrias Metalúrgicas, S.A.**
- HEAD-QUARTERS **Longra, Felgueiras, Portugal**
- VAT No. **500.136.939**
- FOUNDATION YEAR **1946**
- EMPLOYEES **112**
- SHARE CAPITAL **2,5 M€**
- TURN-OVER (2015) **5,7 M€**
- INSTALLED PRODUCTS **46 países**
- INDUSTRIAL FACILITIES **8.400 m2 área coberta**
- PRODUCTION CAPABILITIES
  - Research and development**
  - Prototyping and tools**
  - Molds Engineering**
  - Laboratory quality control**
  - Electronics**
  - Metalworking**
  - Plastics**
  - Woodwork**
  - Upholstery**
  - 2 assembly lines**
  - Logistics and distribution**

# FEATURES



## CONTROL



- 01 Handset portable control
- 02 Electrical lifting by articulated trapezes.
- 03 Electric back-rest and leg-rest independent articulations.
- 04 Auto-contour - back-rest and leg-rest simultaneous movement.



## ERGONOMY



- 05 4 sections mattress platform made by vaporized wooden rulers.
- 06 Foot articulation synchronized with leg-rest movement.
- 07 TYPE 2 MODEL - head and foot boards made in MDF coated to decorative melamine.
- 08 TYPE 6 MODEL - head and foot boards made in veneered beech varnished.



## SAFETY



- 09 TYPE 2 MODEL - integrated side-rails made in MDF coated to decorative melamine.
- 10 TYPE 6 MODEL - integrated side-rails made in veneered beech varnished.
- 11 Epoxy coating metallic finish resistant to sanitary disinfection.
- 12 9V pile to flat articulations in case of electrical failure.



## MOBILITY



- 12 Articulations axis equipped by auto-lubricated washers.
- 13 OPTION - ABS shielded casters Ø125mm with 3 local lockings.
- 14 OPTION - ABS shielded casters Ø125mm with 2 local lockings.
- 15 OPTION - Metallic casters Ø100mm with 2 local lockings.

# LUNA-G E34P

long-term care beds





# CONTROL



## 01 PORTABLE HANDSET CONTROL



### HANDSET CONTROL

Handset portable control with coil cable by Limoss german brand, IP55 insulation, with the following functions:

- Back-rest;
- Leg-rest;
- Auto-contour;
- Elevation.

## 02 FOWLER POSITION



### FOWLER POSITION

Back-rest and leg-rest sections are independently articulated by linear electric motor.

The portable control allows the simultaneous movement of back and legs sections by a single button. This Auto-contour function allows to place the patient directly in the Fowler position without him slide when separately articulates the back-rest section.

## 03 ELEVATION SYSTEM



### ELECTRIC HEIGHT ADJUSTABLE

SHeight adjustable system by articulated trapezes electrically operated by linear motor.

Lifting stroke of 380 mm and a maximum patient load of 220kg.

1946-2016  
70 years

# IMO

# medical beds worldwide





# ERGONOMY

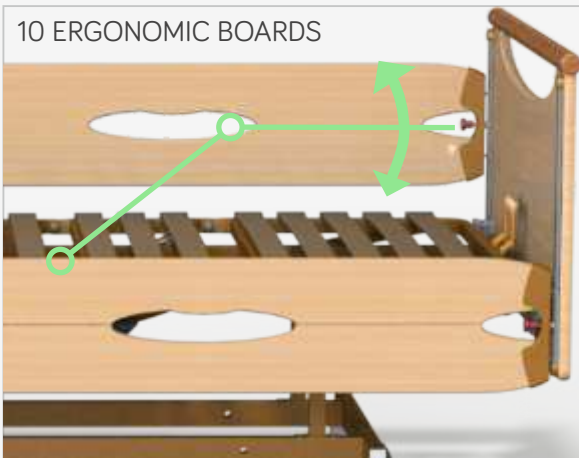


09 WOODEN LATHS PLATFORM



**MATTRESS PLATFORM**  
Optionally 2 or 4 sections mattress platform made in vaporized beech wood laths with PCV finish edges.

10 ERGONOMIC BOARDS



**HEAD & FOOT BOARDS**  
Ergonomic head and foot boards featured on rounded shape, without sharp edges or cutting parts.  
Decor melamine boards with ABS filleted edges.

11 MODEL TYPE 6



**HEAD & FOOT BOARDS**  
Ergonomic head and foot boards featured on rounded shape, without sharp edges or cutting parts.  
Beech wood veneer chipboard panels finished to satin polyurethane varnish.

12 MODEL TYPE 2



**HEAD & FOOT BOARDS**  
Ergonomic head and foot boards featured on rounded shape, without sharp edges or cutting parts.  
MDF boards coated to decorative melamine. Superior cylindrical rod made in solid beech wood finished to darkened polyurethane varnish.



# SAFETY



## 09 TYPE 6 SIDE-RAILS



**INCLUDED SIDE-RAILS**  
The model type 6 includes curtain style security side-rails made in beech tree veneered chipboard varnishing finish. They are collapsible and with safety locker.

## 10 TYPE 2 SIDE-RAILS



**INCLUDED SIDE-RAILS**  
The model type 6 bed includes curtain style security side-rails made in melamine coated MDF boards. They are collapsible and with safety locker. Edges are provided with ABS plastic caps.

## 11 METAL FRAME



**CLEANING ENDURANT**  
The metal frame finished by electrostatic epoxy painting with previous anti-corrosion treatment allows a product suitable for cleaning and hospital disinfecting with alcohol based detergents and moisturized cloth with tepid water.

## 12 9 VOLTS PILE



**9 VOLTS PILE**  
The bed electrical system is provided by a 9V pile to return back motors to horizontal position in case of electric malfunction or power failure.





## MOBILITY



### 13 AUTO-LUBRICATED BUSHINGS



**ENDURANT ARTICULATIONS**  
The bed mobile parts, particularly the articulations, are provided with special plastic bushings that don't require lubrication.  
This system ensures a lasting and good functioning over time.

### 14 ABS CASTERS Ø125MM OPTION



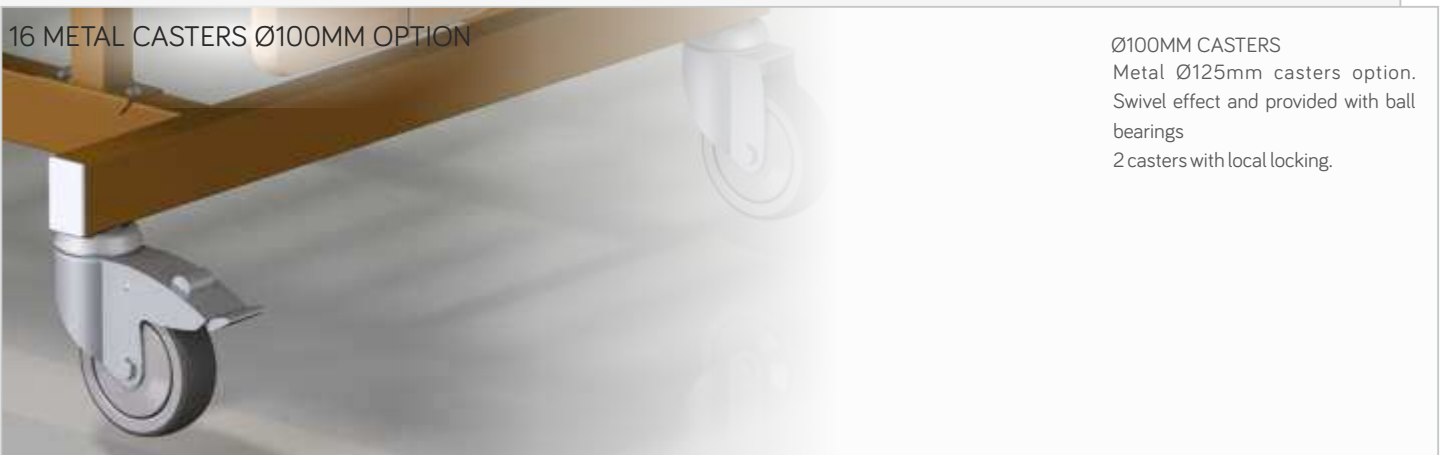
**3 LOCAL LOCKS**  
ABS shielded Ø125mm casters option. Swivel effect and provided with ball bearings  
3 casters with local locking.

### 15 ABS CASTERS Ø125MM OPTION



**2 LOCAL LOCKS**  
ABS shielded Ø125mm casters option. Swivel effect and provided with ball bearings  
2 casters with local locking.

### 16 METAL CASTERS Ø100MM OPTION



**Ø100MM CASTERS**  
Metal Ø125mm casters option. Swivel effect and provided with ball bearings  
2 casters with local locking.

## LUNA-G TYPE 2

\*Mattress platform height with Ø100 mm casters. For Ø125 mm casters add 25 mm to the mentioned dimensions.



### DIMENSIONS (±5%)

Mattress platform	2000 x 885 mm
External dimensions	2100 x 1050 mm
Minimum/Maximum height	380 - 760 mm*

### ARTICULATIONS (±5%)

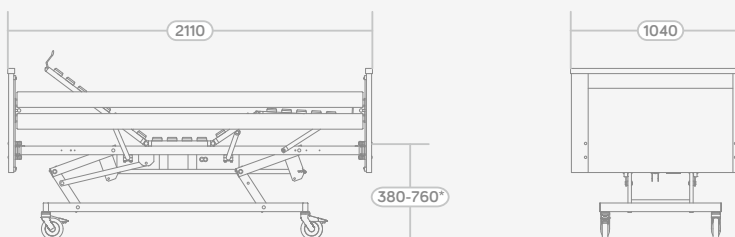
Relève maximale du dos	70°
Relève maximale des jambes	35°
Relève maximale des pieds	30°

### CAPACITÉS (±5%)

Charge Maximale	220 Kg
Electric tension	230VAC-50/60Hz
Option	110/120VAC-50/60Hz

## LUNA-G TYPE 6

Mattress platform height with Ø100 mm casters. For Ø125 mm casters add 25 mm to the mentioned dimensions.



### DIMENSIONS (±5%)

Mattress platform	2000 x 885 mm
External dimensions	2110 x 1040 mm
Minimum/Maximum height	380 - 760 mm*

### ARTICULATIONS (±5%)

Relève maximale du dos	70°
Relève maximale des jambes	35°
Relève maximale des pieds	30°

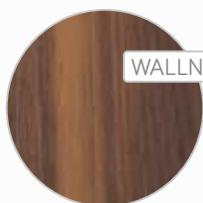
### CAPACITÉS (±5%)

Patient maximum load	220 Kg
Electric tension	230VAC-50/60Hz
Option	110/120VAC-50/60Hz

Indicative colors only check with real samples.



EPOXY RAL1011



WALNUT



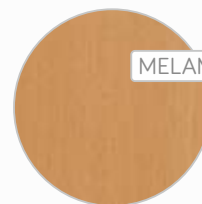
MELAMINE M053A



EPOXY RAL9003



BEECH



MELAMINE M302

**IMO-INDUSTRIAS METALURGICAS, S.A.**  
www.imo.com.pt

**IMO PORTO**  
Rua Adolfo Casais Monteiro, 117  
4050-520 Porto  
Tel.: 222 009 767  
Fax: 222 000 647  
porto@imo.com.pt

**HEADQUARTERS & FACTORY**  
Rua Dr. Aurélio Teixeira de Sousa, 575  
4650-312 Rande  
PORTUGAL  
T. + 351 255 340 220  
F. + 351 255 340 239  
sede@imo.com.pt

**IMO LISBOA**  
Av. Defensores de Chaves, 87-A  
1000-115 Lisboa  
Tel.: 217 963 478  
Fax: 217 975 822  
lisboa@imo.com.pt

**AUTHORISED DISTRIBUTOR:**